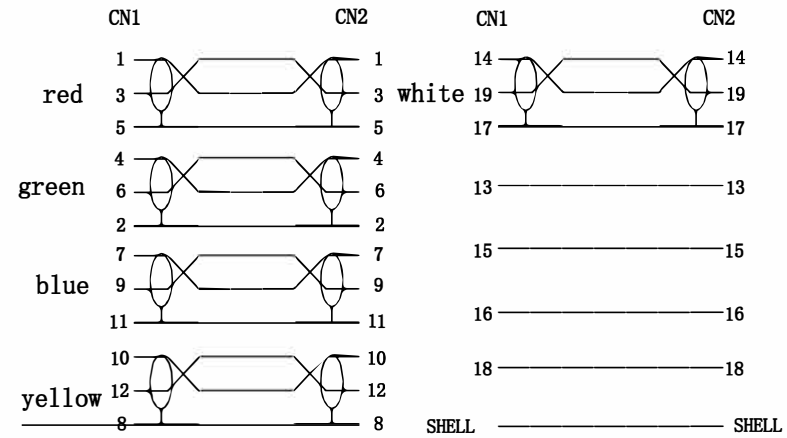
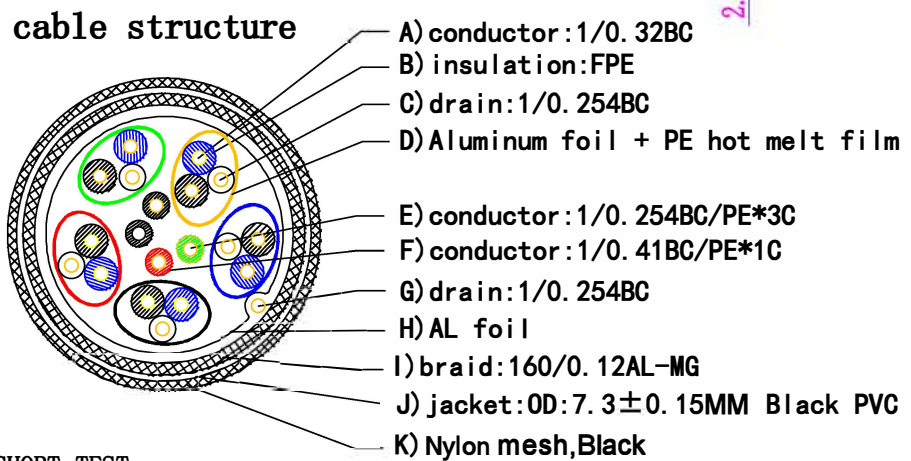


NO.	REV	DESCRIPTION	DATE



NOTE:
 1. 100% OPEN, SHORT TEST;
 2. ON-RESISTANCE: MAX 2.0Ω;
 3. INSULATION RESISTANCE: MIN 10MΩ;
 4. WITHSTAND VOLTAGE: DC 350V;
 5. SUPPORT 8K*60Hz.

8	Label	white character with black background	1PC
7	Dust Cover	transparent PE	2PCS
6	Out mold	Black PVC 60P	2PCS
5	Shell	Silver aluminum casing	2PCS
4	Internal mold	2.1v Professional internal mold, primary color PE internal film material	2PCS
3	Copper foil	wide 6MM double conducting copper foil	2PCS
2	Connector	2.1v HDMI A male gold plated + cover tinplate + black cable bracket	2SET
1	Cable	2.1v HDMI CABLE OD: 7.3MM BLACK {1/0. 32BC/FPE*1P+1/0. 254BC+AL}*5P+1/0. 254BC/PE*3C +1/0. 41BC/PE*1C+AL+1/0. 254BC+160/0. 12ALB}+Nylon mesh, Black	
NO.	Title	Description	Q'ty

PART NO.		32-3763MB/32-3765MB		customer P/N	
Draw		WZC		CONSUMER	
Check		DATE		2023.12.08	
APP.		PAGE 1 of 1		UNIT mm	
		SCALE		1:1	

FNAME

A

B

C

D

A

B

C

D

1

2

3

4

5

6

1

2

3

4

5

6