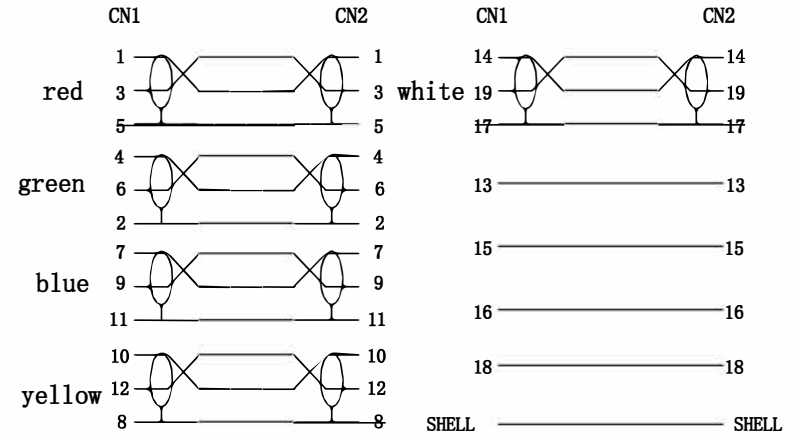
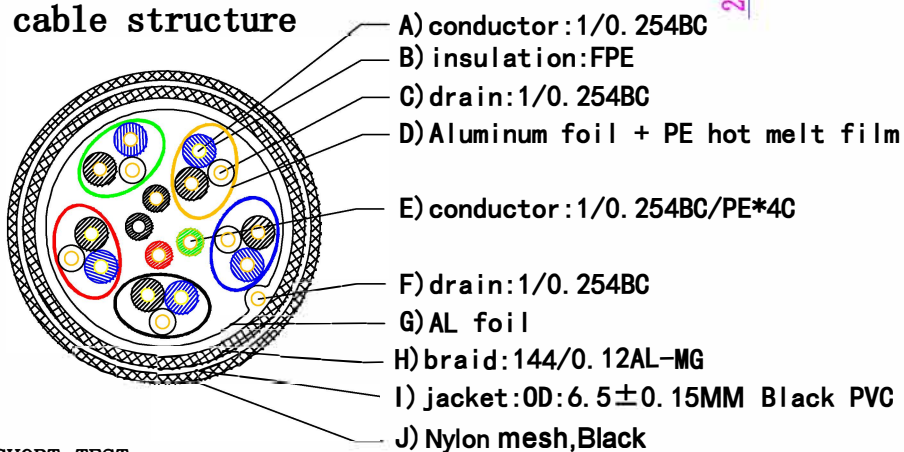
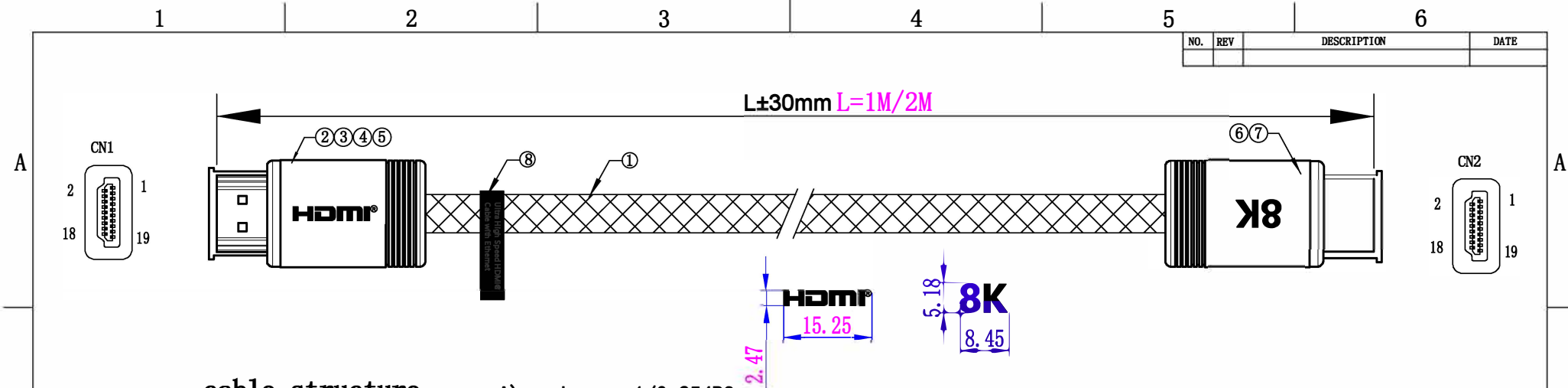


NO.	REV	DESCRIPTION	DATE



wiring diagram

- NOTE:**
- 100% OPEN, SHORT TEST;
 - ON-RESISTANCE: MAX 2.0Ω;
 - INSULATION RESISTANCE: MIN 10MΩ;
 - WITHSTAND VOLTAGE: DC 350V;
 - SUPPORT 8K*60Hz.

8	Label	white character with black background	1PC
7	Dust Cover	transparent PE	2PCS
6	Out mold	Black PVC 60P	2PCS
5	Shell	Silver aluminum casing	2PCS
4	Internal mold	2.1v Professional internal mold, primary color PE internal film material	2PCS
3	Copper foil	wide 6MM double conducting copper foil	2PCS
2	Connector	2.1v HDMI A male gold plated + cover tinplate + black cable bracket	2SET
1	Cable	2.1v HDMI CABLE 144/0.12AL OD:6.5MM BLACK {1/0.254BC/FPE*1P+1/0.254BC+AL}*5P+1/0.254BC/PE*4C+AL+1/0.254BC+144/0.12ALB)+Nylon mesh, Black	
NO.	Title	Description	Q'ty

		PART NO.		customer P/N	
		32-3761MB/32-3762MB			
Draw	WZC	CONSUMER			
Check		DATE	2023.12.08	REV.	A
APP.		PAGE 1 of 1	UNIT mm	SCALE	1:1