

1

2

3

4

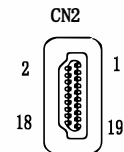
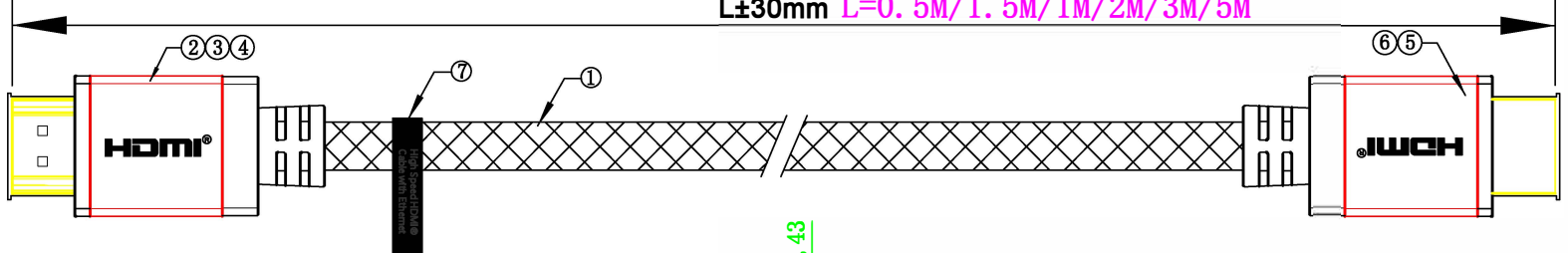
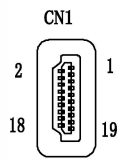
5

6

NO.	REV	DESCRIPTION	DATE

L±30mm L=0.5M/1.5M/1M/2M/3M/5M

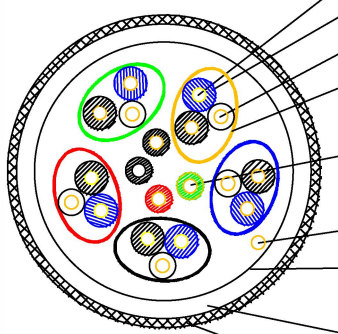
A



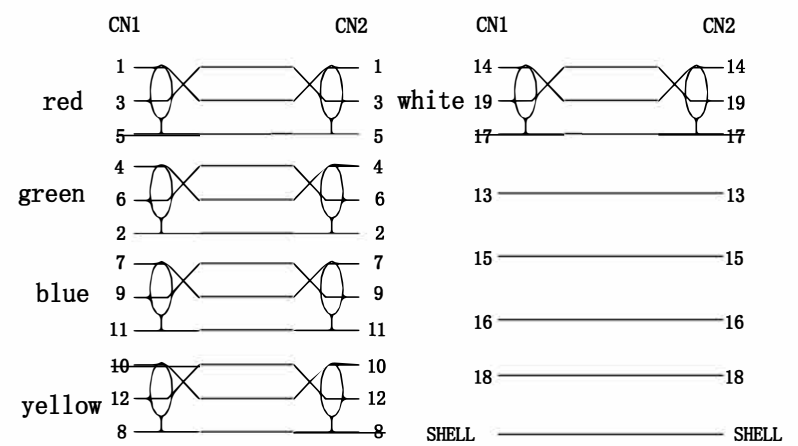
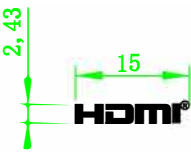
A

FNAME
B

cable structure



- A) conductor: 1/0.25SG
- B) insulation: FPE
- C) drain: 1/0.25CCS
- D) Aluminum foil
- E) conductor: 1/0.25CCS/PE*4C
- F) drain: 1/0.254CCS
- G) AL foil
- H) jacket: OD: 6.0±0.2MM Black PVC
- I) Nylon mesh, Black+Red



wiring diagram

NOTE:

1. 100% OPEN, SHORT TEST;
2. ON-RESISTANCE: MAX 2.0Ω;
3. INSULATION RESISTANCE: MIN 10MΩ;
4. WITHSTAND VOLTAGE: DC 350V;
5. SUPPORT 4K*2K@60Hz.

D

NO.	Title	Description	Q'ty
7	Label	white character with black background	1PC
6	Dust Cover	transparent PE	2PCS
5	Out mold	Black PVC 60P	2PCS
4	Shell	Red aluminum casing	2PCS
3	Internal mold	Professional internal mold, primary color PE internal film material	2PCS
2	Connector	HDMI A male gold plated + black cable bracket	2SET
1	Cable	2.0v HDMI CABLE OD:6.0MM BLACK {1/0.25SG/FPE*1P+1/0.25CCS+AL}*5P+1/0.25CCS/PE*4C+1/0.25CCS+AL}+Nylon mesh, Black+Red	

		PART NO.		customer PN	
Draw	WZC	CONSUMER			
Check		DATE	2023.12.08	REV.	A
APP.		PAGE 1 of 1	UNIT mm	SCALE	1:1

1

2

3

4

5

6