



FEATURES:

- BNC Bulkhead Socket - Socket
- 75 Ohm Turned

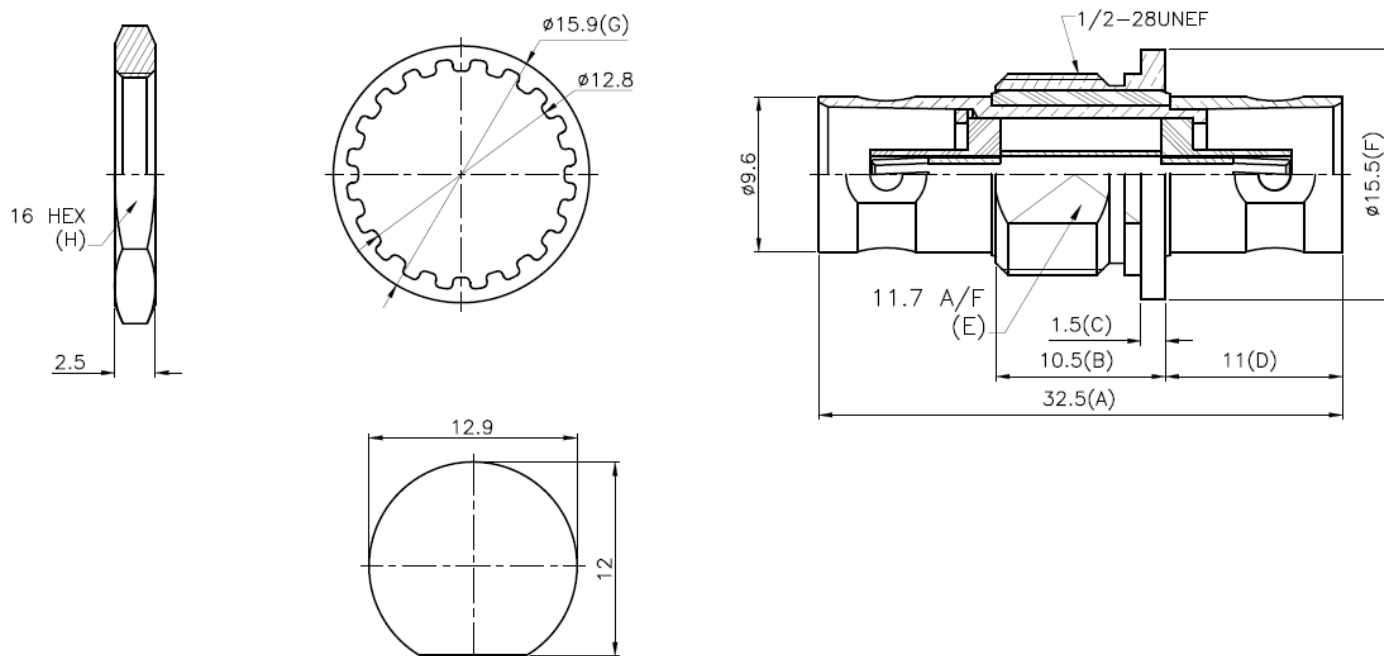


DESCRIPTION:

Straight-through BNC Bulkhead coupler for joining two male connected cables. Manufactured from nickel plated brass. Available individually and in packs of 100.

TECHNICAL DRAWING:

RoHS COMPLIANT



ORDERING INFORMATION:

Part Code	Description
BNC22	BNC Bulkhead Socket – Socket Insulated Coupler 75 Ohm Turned
BNC22-B	BNC Bulkhead Socket – Socket Insulated Coupler 75 Ohm Turned Handy Pack (100pcs)