



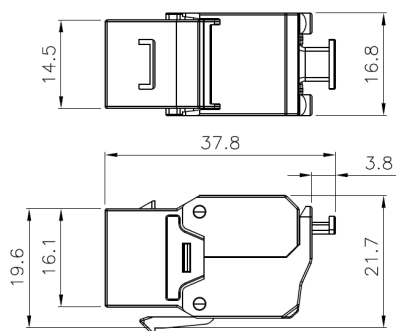
### DESCRIPTION

The Cat6a Shielded Keystone Jack offers independently verified Cat6a component compliant performance and supports high speed protocols such as 10G Ethernet. The Jack is backwards compatible to all preceding cabling categories, ensuring support of all IP applications. The Jack is compatible with a wide range of patch panels and work area fascias, including flat and angled options, and the low-profile design enables enhanced cable management in backboxes. The Jack is constructed using robust Die-cast Zinc, offering excellent durability and superior shielding performance.

### FEATURES

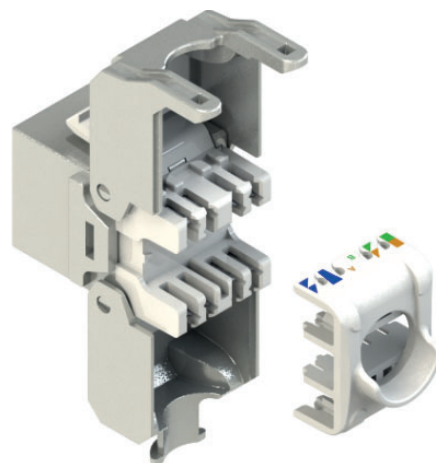
- Category6a Component-Rated Performance
- Slim Size & High Density Design
- T568A & B Wiring
- Power Over Ethernet (PoE++) upto 100 watts
- DELTA verified IEEE802.3bt PoE
- IEC60603-7 & ANSI/TIA-1096-A Complied
- Tool-Free

### TECHNICAL DRAWING



### TECHNICAL INFORMATION

<b>Conductor Size</b>	24-22AWG Solid or Stranded
<b>Cable Diameter</b>	0.19 – 0.33 inches (4.9 – 8.5mm)
<b>Storage Temp</b>	-40°C to +70°C
<b>Operating Temp</b>	-10°C to +60°C
<b>Materials</b>	Jack Housing: Zinc Die-casting IDC Housing & Cap: PC UL94-VO
<b>Dimensions</b>	37.8 x 16.8 x 21.7mm



### ORDERING INFORMATION

Part Code	Description
72-3758	Cat6a Shielded Pack of 24 Keystone Jack PoE++ (ZERO Plastic Packaging)
72-3759	Cat6a Shielded Keystone Jack PoE++