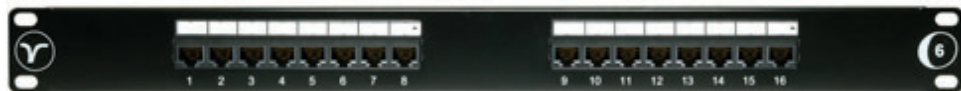


FEATURES

- Cat6 UTP Patch Panel
- Loaded Patch Panel
- 16 Port
- 1u Chassis
- Integrated Cable Management Bar
- Compatible with 110 & Krone Style Punch Down Tool



DESCRIPTION

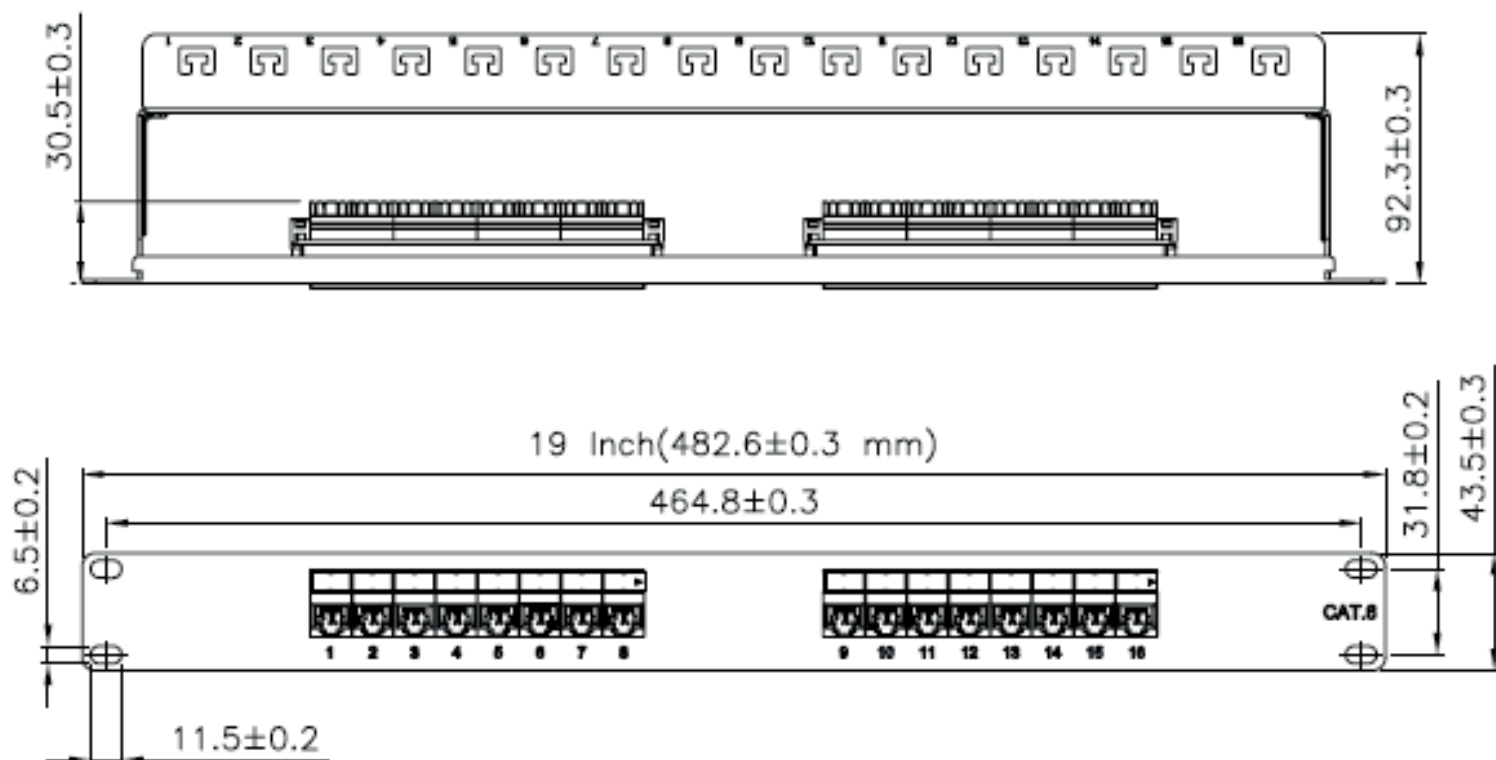
The Cat6 UTP 1u 16 Port Patch Panel uses a dual termination punch down block suitable for LSA or 110 tooling.

568B punch down blocks on the rear of the panel at 180 degrees to the front. Each of the 16 cables can be individually secured to the rear of the patch panel with the integrated cable management bar.

Numbered ports and slide in labels beneath a Perspex cover in two groups of eight.

Coloured markings on punch down blocks and rear labels for correct cable termination.

TECHNICAL DRAWING



ORDERING INFORMATION

Part Code	Description
72-3682	16 Port Cat6 UTP 1u Patch Panel

March 2022