



FEATURES

- Cat6 FTP Patch Panel
- Loaded Patch Panel
- 24 Port
- 1u Chassis
- Supplied with Earth Bonding Post
- Supports High-Speed Protocols up to 10G Ethernet

DESCRIPTION

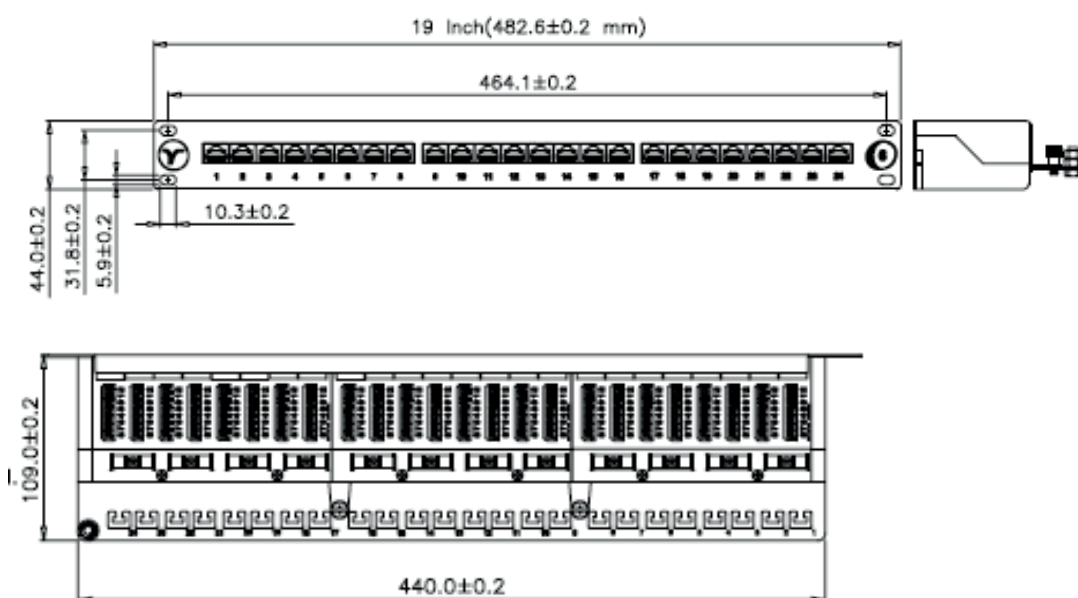
The Cat6 FTP 1u 24 Port Patch Panel offers Cat6 compliant performance and supports high-speed protocols up to 10G Ethernet.

The panel is backwards compatible to all preceding cabling categories, ensuring support of all IP applications designed to run over them.

The horizontally mounted PCB provides easy termination using Krone style or 110 punch down tool and is protected by an easy to remove cover. The IDC's are clearly labeled for 568B wiring. The panel also has individually numbered ports.

The panel is also supplied with an earth bonding post to help maintain grounding continuity.

TECHNICAL DRAWING



ORDERING INFORMATION

Part Code	Description
72-3641	24 Port Cat6 FTP 1u Patch Panel