



### FEATURES

- HDMI Male - HDMI Male 2.1
- Individually Bagged
- 8K@60Hz & 4K@120Hz
- Fully Moulded
- Available in 5 different lengths
- Backwards Compatible with all preceding HDMI Standards

### DESCRIPTION

This Ultra High-Speed HDMI 2.1 cable supports resolutions of 8K@60Hz (7680x4320) and 4K@120Hz (3840x2160). The latest HDMI Standard (2.1) supports bandwidth upto 48Gbps. They are backwards compatible with all preceding HDMI standards.

HDMI technology is the global standard for connecting high-definition equipment. HDMI is the intelligent, all-digital interface used by most of the worlds largest consumer electronics, PC and mobile device manufactures. HDMI is backwards compatible with DVI, so you can use a converter/adaptor to view video on a DVI device.

### TECHNICAL SPECIFICATIONS

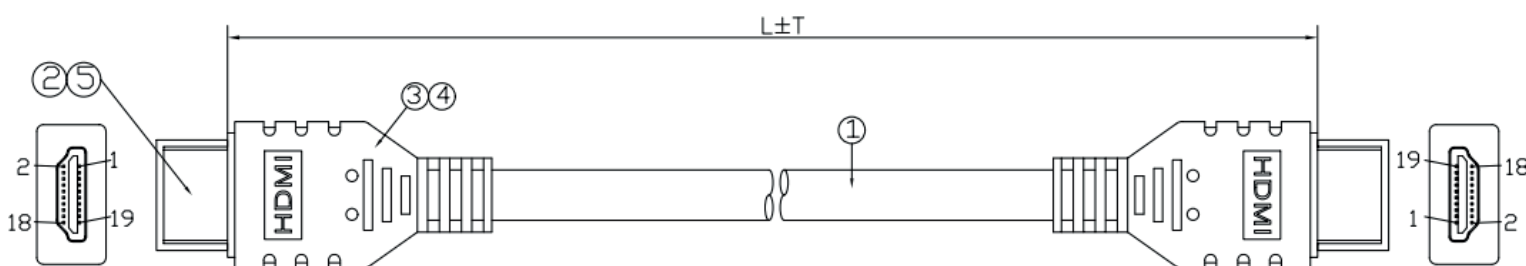
Connector: HDMI Male - Gold Plated Shell and Pin with Red Insulation for 0.5m-3m and Black insulation for 5m

Jacket: Black PVC Jacket, 30AWG, OD: 6.0+0.2mm (0.5m-2m)

Black PVC Jacket, 28AWG, OD: 7.0+0.2mm (3m)

Black PVC Jacket, 28AWG, OD 6.5+0.2mm (5m)

### TECHNICAL DRAWING



### ORDERING INFORMATION

Part Code	Description
32-3760	0.5m Ultra High-Speed 2.1 Male-Male (8K@60Hz & 4K@120Hz)+Ethernet 30AWG Blk
32-3761	1m Ultra High-Speed 2.1 Male-Male (8K@60Hz & 4K@120Hz)+Ethernet 30AWG Blk
32-3762	2m Ultra High-Speed 2.1 Male-Male (8K@60Hz & 4K@120Hz)+Ethernet 30AWG Blk
32-3763	3m Ultra High-Speed 2.1 Male-Male (8K@60Hz & 4K@120Hz)+Ethernet 30AWG Blk
32-3765	5m Ultra High-Speed 2.1 Male-Male (8K@60Hz & 4K@120Hz)+Ethernet 30AWG Blk