



FEATURES:

- RJ45 EZ Easy Plug
- Cat6
- UTP
- Stranded or Solid
- Available in Cat5e UTP, Cat5e FTP and Cat6 FTP

DESCRIPTION:

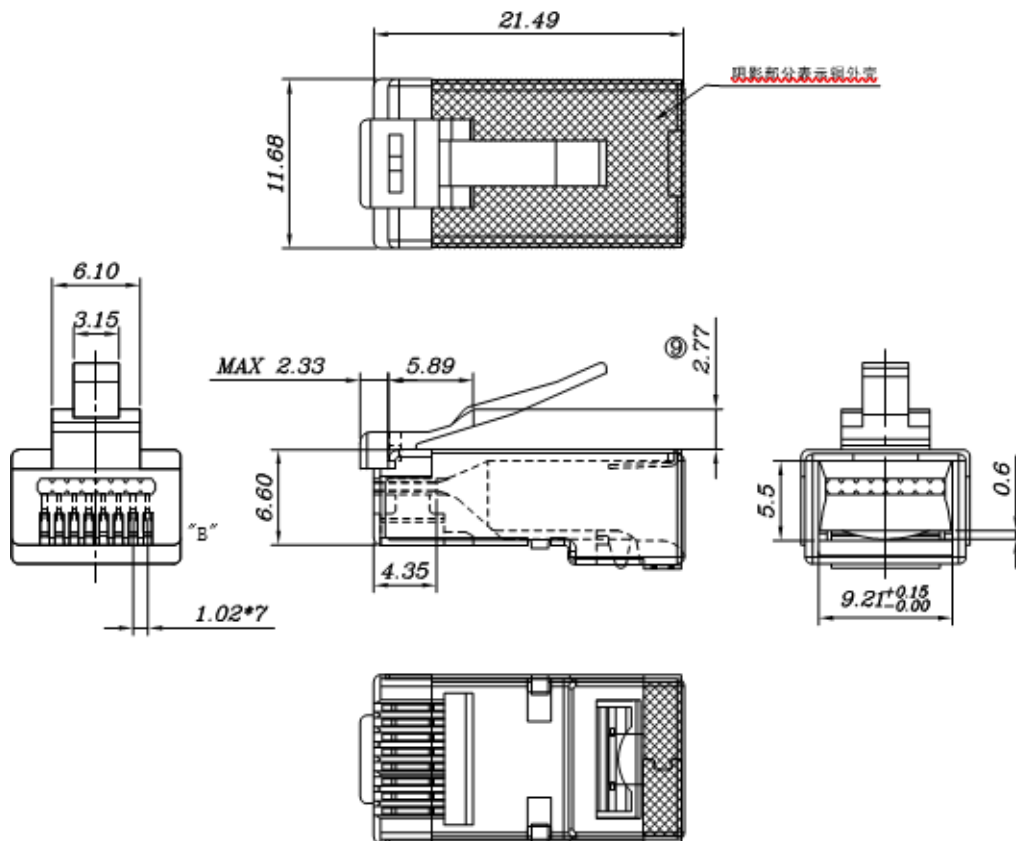
Possibly the simplest Cat6 RJ45 Termination ever created.

Insert the wires all the way through the connector. Simple one-piece design, no loading bars or liners just check the cables are in the correct order. Simply pull the connector down over the cable jacket, trim the cables and crimp the connector in one step with the EZ Easy Plug Crimping Tool.

Make quicker terminations and reduce waste. Suitable for stranded or solid cable (23 – 26AWG)

Cable Stripper, Crimping Tool & Boots sold separately.

TECHNICAL DRAWING:



ORDERING INFORMATION:

Part Code	Description
22-2203	Cat5e – RJ45 UTP EZ Easy Plug
22-2204	Cat5e – RJ45 FTP EZ Easy Plug
22-2205	Cat6 – RJ45 UTP EZ Easy Plug
22-2206	Cat6 – RJ45 FTP EZ Easy Plug

